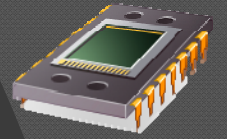


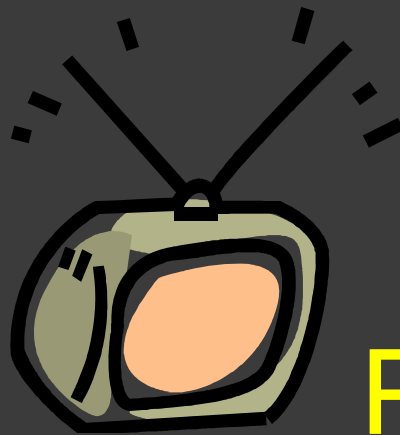
Electronics Recycling



Drop-off Container
Located at
Village of Mokena



Public Works Garage
191st & Wolf



Monday - Friday
7:30 a.m. – 4:00 p.m.



See attached list of recyclable items

Mokena/Will County Residential Electronic Recycling Program

Recycling electronics avoids air, water and land pollution. It reduces the need to extract valuable and limited resources from the earth. It also reduces the energy and other resources used in new product manufacturing. Many of the components recovered can be used in new items. This program protects Will County water and air resources, while reducing the materials going to local landfills. Some computers have a shelf life of only 3 to 5 years. It is often less expensive to purchase a new electronic item instead of repairing it. This increases the amount of waste generated and increases the amount of natural resources needed to make new products. The EPA states that electronics contain hazardous materials, such as lead, mercury, and hexavalent chromium, batteries and color cathode ray tubes (CRTs). Televisions and CRT monitors contain an average of 4 lbs of lead (depending on size). Mercury from electronics has been cited as a leading source of mercury in municipal waste. Lastly, brominated flame retardants are commonly added to plastics used in electronics. If discarded, these toxics can be released into the environment through landfill leachate. Worldwide, an estimated 20-50 million tons of electronic waste is generated annually, and an estimated 85% of it ends up in landfills.

Drop-Off Instructions

- Items accepted at the PUBLIC WORKS GARAGE 19004 Wolf Road.
- Items can be dropped off any time, but materials dropped-off other than during operational hours Monday through Friday 7:30 AM to 4:00 PM will be dropped off at the owners risk until they are placed in the recycling container during the next business day.
- Bring only residentially generated electronic items. No Business electronics can be taken. Businesses are encouraged to call Will County or go to their website for recycling/reuse information.
- **Clean off any personal information on hard drives (Reformatting the hard drive or rewriting the disc is recommended.)**
- Please place materials carefully in boxes as indicated by signs at the site.
- DO NOT TAKE any items that have already been dropped off. Once items have been placed in the box they are part of the Recycling Program.

Items Accepted (Broken or Obsolete)

- Adding Machines
- Answering Machines
- CB's/Two-way radios
- Calculators
- Cameras (film, magnetic tape, digital)
- CD ROM/Zip/Tape Drives
- CDs, DVDs, Floppies, etc
- Copy/Fax/Scanner Machines
- Cords & Cables (power, USB, etc.)
- Digital Clocks
- DVD
- Electronic Mice
- Hand Held Games
- Hard Drives
- Joysticks/Game controls
- Keyboards
- Laptops
- Laser Disc Players
- Microwaves
- Modems
- Monitors
- Pagers
- Palm Organizers
- Paper shredders
- Personal Computers (PCs)
- Portable Radio/CD Players
- Postage Machines
- Printers (laser, ink jet, dot matrix, etc.)
- Speakers/Stereo Systems
- String Lights (holiday lights on wires)
- Telephones/Cell Phones
- Televisions
- Typewriters/Word Processors
- UPS (Battery Backups)
- VCR
- Video Game Players